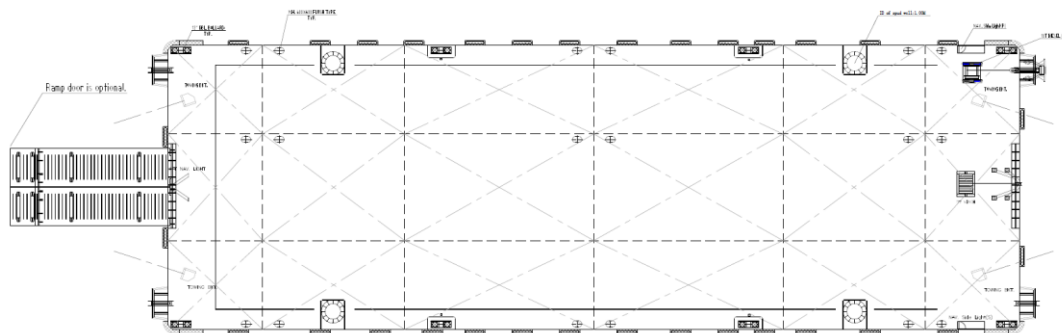
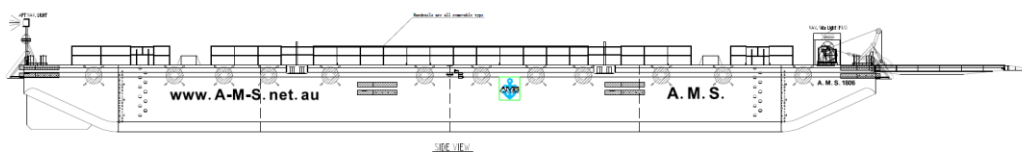


A.M.S. 1806

180ft Deck Cargo Ballast Tank Spud Barge



SPECIFICATIONS

Registry	Singapore
Official No.	399505
Classification	ABS A1 Deck Cargo Ballast Tank Spud Barge
Year Built	Delivery Q4 2014
Length (Overall)	180 Feet (54.86m)
Breadth (Moulded)	60 Feet (18.29m)
Depth (Moulded)	14 Feet (4.26m)
Cargo Deadweight	Approx. 2,300 Tons
Deck Load	20 Ton / m ²
Deck Fittings	4 x EA SMIT Type Towing Brackets at Bow and Stern (WLL 102T) 4 x \varnothing 1.0m Spud Wells Removable Hand Rails Ramp Fingers at Bow & Stern for Removable and Road Transportable Ramp Door (Total Dims. W5m x L10m) – (Ramp Door is Optional) Side Ladder Pockets (Integrated) 8 nos. Mooring Double Bits Type 40T WLL Bollard (Newly Designed High Strength Bollards) Forward A-Frame for Towing Bridle Recovery 4 Point Mooring System (10T or 20T Winches) – Optional

Particulars given herein are without warranty as to accuracy and interested parties must satisfy themselves by inspection or other means of detail of the vessel

AUSTRALIA MARINE SERVICES PTY LTD T/A A.M.S. Tugs & Barges

Owner/Operator of Barges & Offshore Vessels

ABN NO: 80 072 693 639

A.M.S. MARINE HUB - Unit 6 / 220 Star Street, Welshpool WA 6106, Australia

Phone: +61 (0) 8 9470 4739 · Fax: +61 (0) 8 9470 4731

Email: AMS@a-m-s.net.au · Website: www.A-M-S.net.au



N° 12000038