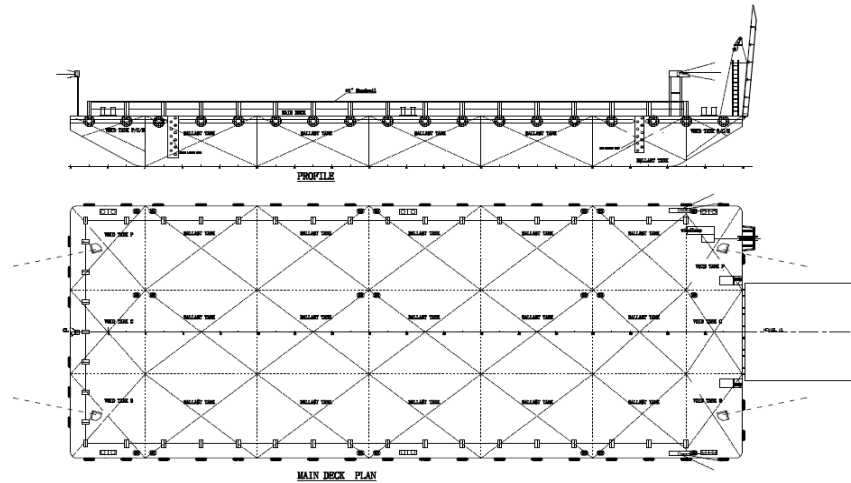




Owner / Operator of Barges & Offshore Vessels
 ABN NO: 80 072 693 639

A.M.S. 1803
180ft Deck Cargo & Ballast Tank Barge



Registry / Official No.	:	Singapore / 397560
Year Built	:	Under Construction; Delivery February 2012
Classification	:	ABS A1 Deck Cargo & Ballast Tank Barge
Length (Overall)	:	180 Feet (54.86m)
Breadth (Moulded)	:	70 Feet (21.34m)
Depth (Moulded)	:	14 Feet (4.27m)
Cargo Deadweight	:	Approx. 3,000 TONNES
GT / NT	:	1261 tonnes / 378 tonnes
Deck load	:	20 ton / m2
Deck Plate, Side & Bottom Plate	:	16 mm / 12 mm / 12 mm
Number of bulkheads	:	TWO (2) Longitudinal / SIX (6) Transverse
Deck Fittings	:	1 x 10t diesel driven winch, 1 x 2160kg Stockless Bower Anchor
	:	2 x EA Smit Type towing brackets at bow and stern (each end)
	:	43 x Class Approved Cargo Stanchions
	:	Ramp Door L9.5m x W8.35m
	:	Side Ladder Pockets

Particulars given herein are without warranty as to accuracy and interested parties must satisfy themselves by inspection or other means of detail of the vessel

AMS MARINE HUB - 4/220 Star Street, Welshpool, WA 6106
Phone: +618 9470 4739 FAX: +618 9470 4731
Email: ams@a-m-s.net.au Web: http://www.A-M-S.net.au