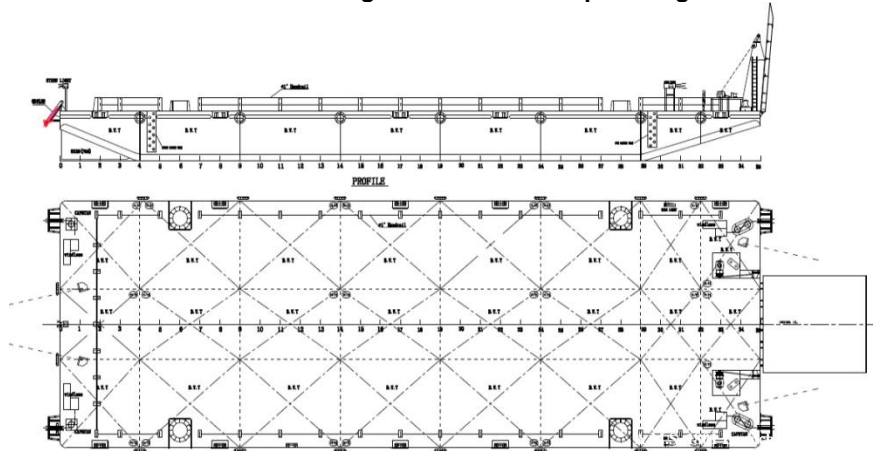




Owner / Operator of Barges & Offshore Vessels
ABN NO: 80 072 693 639

A.M.S. GLADSTONE

210ft Deck Cargo & Ballast Tank Spud Barge



Registry / Official No.	: Singapore / 397559
Year Built	: Under Construction; Delivery February 2012
Classification	: ABS A1 Deck Cargo & Ballast Tank Spud Barge
Length (Overall)	: 210 Feet (64.008m)
Breadth (Moulded)	: 70 Feet (21.336m)
Depth (Moulded)	: 14 Feet (4.267m)
Cargo Deadweight	: Approx. 4000 TONNES
Deck load	: 25 ton / m ²
Deck, Side & Bottom Plate	: 16mm / 14 mm / 16mm
Number of bulkheads	: TWO (2) Longitudinal / SEVEN (7) Transverse W.T.
Deck Fittings	: 1 x 10t diesel driven winch, 1 x 2160kg Stockless Bower Anchor : 2 x EA Smit Type towing brackets at bow and stern (SWL 80T) : 41 x Class Approved Cargo Stanchions : Ramp Door L9.5m x W8.35m : Side Ladder Pockets : 10 nos. mooring Double bits type bollard 10"N.B heavy pipe : 4 x L25m W1.2m Spud Wells on each corners through the hull : 4 point mooring system (12.5 T Hydraulic Winches & 2.5 T Anchors)

Particulars given herein are without warranty as to accuracy and interested parties must satisfy themselves by inspection or other means of detail of the vessel

AMS MARINE HUB - 4 / 220 Star Street, Welshpool, WA 6106
Phone: +618 94704739 FAX: +618 94704731
Email: AMS@a-m-s.net.au Web: <http://www.A-M-S.net.au>