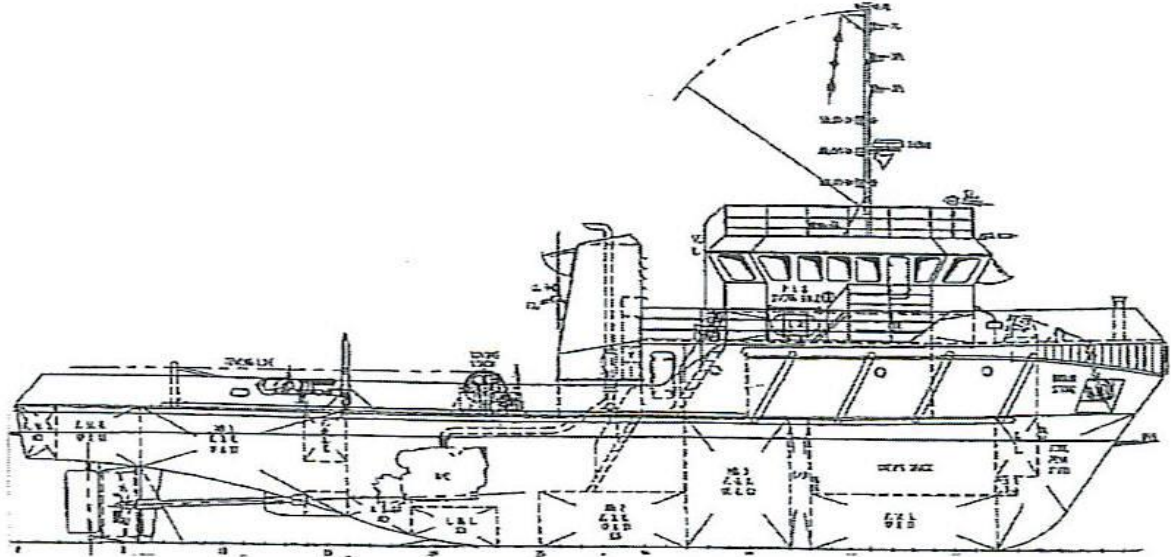


A.M.S. SENTOSA



GENERAL DATA

Registry : Singapore
 Built : Delivery May 06
 Official Number : 392156
 Call Sign : 9V6930
 Length : 30.00 M
 Breadth : 8.60 M
 Depth / Draft : 4.30 M / 3.60 M
 Classification : NKK

MAIN ENGINE / GENERATOR

Main Engine : 2 X Caterpillar 3508B
 : 1000 BHP @ 1600 RPM
 Gear Box : 2 X Twin Disc (4.96:1)
 Generator : 2 X Cummins 6BT5.9 - G6
 : 78 KW 240/415V 50Hz
 Propulsion : 2 X FPP in Kort nozzle

ACCOMMODATION

Single cabin : 2
 Twin cabin : 1
 8 men cabin : 1
 Total : 12 men

NAVIGATION / COMMUNICATION EQUIPT.

Radar : Furuno FS-1832
 Echo Sounder : Furuno FCV-668
 GPS : Furuno Navigator P-32
 Compass : Magnetic Type SR - 150PK
 Navtex : Furuno NX-700B
 SSB : Furuno FS-1570
 Inmarsat : Inmarsat-C Felcom 15
 VHF : 2 X Furuno FM-8800
 : 2 X Portable VHF Saracom
 Eprib : Saracom 406 EB - 10

TANK CAPACITY

Fuel Oil : 245 m3
 Fresh Water : 35 m3

DECK EQUIPMENT

Tow Winch : Hydraulic Single Drum
 : 15 tons @ 1st layer with
 : 90 ton brake with spooler

Particulars given herein are without warranty as to accuracy and interested parties must satisfy themselves by inspection or other means of detail of the vessel

