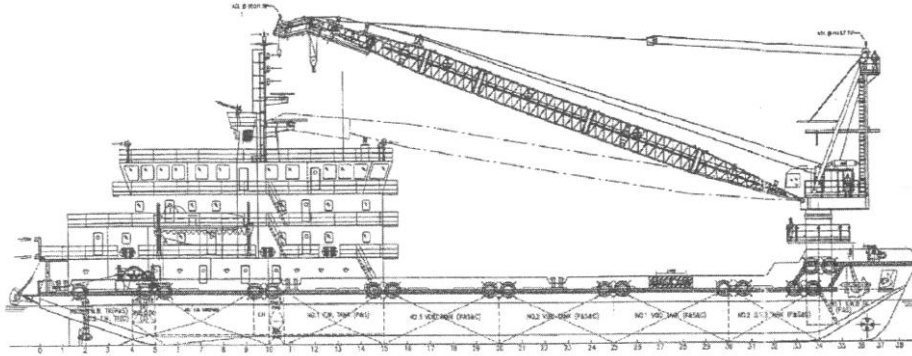


A.M.S. SUPPORTER



GENERAL DATA

Built : 2009
 Type : Accommodation/Work boat
 (Self Propelled)
 Length : 70.15 M
 Breadth : 19.52 M
 Depth : 4.27 M
 Class : Bureau Veritas
 Speed : 9 Knots

MAIN ENGINE/GENSET

Main Engine : 2 X Caterpillar-3508B@1000 bhp
 Propulsion : 2 X HRP 5111 wm Azimuth thrusters
 Generators : 3 X Caterpillar 3406C @ 245 kW
 415 V/50 hz
 Emergency : 1 X 84 kW

DECK EQUIPMENT

Mooring System : 4 X Single drum (40 tons) electric
 Hydraulic winches with auto spool
 Brake holding @ 100 tons
 Wire Size : 38 mm X 1000 M
 Anchors : 4 tons flipper delta
 Clear Deck : Approx. 400 m2 woodlined @
 5 tons/m2
 Crane : Favco 6/10k API2C with 41.2M
 Boom SWL 27 tons

TANK CAPACITY

Fuel Oil : 400 m3
 Fresh Water : 600 m3
 SW Ballast : 400 m3
 Foam : 10 m3
 Lub Oil : 11 m3
 Sewage : 20 m3

NAVIGATION/COMMUNICATION EQUIPT.

Radar : JRC with AIS interface 96 nm
 Echo Sounder : JRC
 GPS : JRC
 Gyro Compass : Anschuetz (Master with 2 repeater)
 Magnetic Compass : Saura MR 150A
 Weather fax : JRC type
 Doppler Speed Log : JRC type
 SSB (GMDSS) : 1 X Furuno Model RC-1500-IT
 Complete console
 VHF (GMDSS) : 2 X Furuno
 3 X Portable units
 Epirb (GMDSS) : 1 X Mcurdo model E3
 Sart : 2 X Mcurdo S4
 Navtex : 1 Unit
 PA System : Fitted with 3 talk back stations
 Intercom : Fitted 45 stations

ACCOMMODATION

Single Cabin : 4 units
 4 Man Cabin : 28 units
 Total : 116 men
 Hospital : 2 men
 Office : 2 units
 Prayer Room : 1 unit
 Recreation : 1 unit
 Mess Room : 1 unit

Particulars given herein are without warranty as to accuracy and interested parties must satisfy themselves by inspection or other means of detail of the vessel

