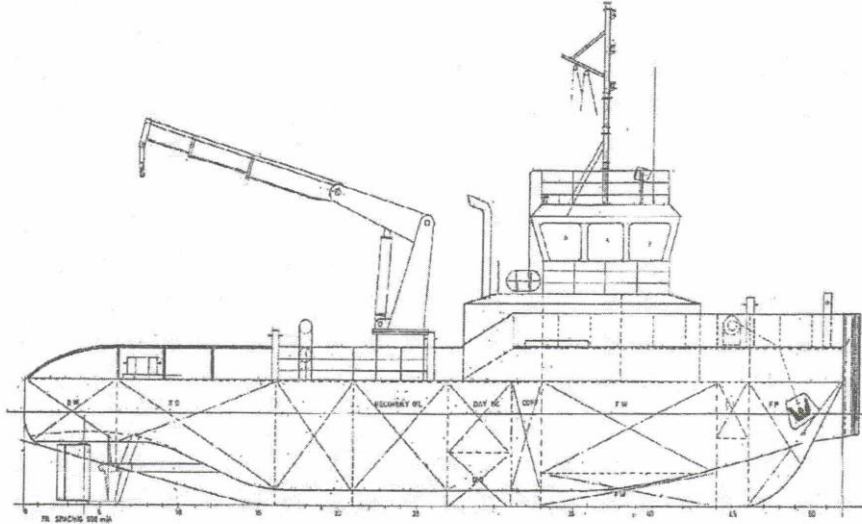


A.M.S. SURF



GENERAL DATA

Registry : Singapore
 Built : 2007
 Official Number : 392696
 Length : 26.00 M
 Breadth : 9.20 M
 Depth/Draft : 3.60 M / 2.80 M
 Classification : Germanischer Lloyd
 Call Sign : 9V7052

MAIN ENGINE / GENERATOR

Main Engine : 2 X Caterpillar 3412
 DITA 720 HP@ 1800 rpm
 Gear Box : Twin Disc MG5222
 Ratio 6.10:1
 Generator : 2 X Cummins 6BT 5.9G2
 @ 78 KW
 Propulsion : 2 X FPP (Open)

ACCOMMODATION

One Man Cabin : 2 units
 Four Man Cabin : 2 units
 Total : 10 Men

NAVIGATION/COMMUNICATION EQUIPT.

Radar : Furuno Model 1831 – 32nm
 Echo Sounder : Furuno Model 1831 FCV-66
 GPS : Furuno GP -31
 Compass : Magnetic Type T -150B
 SSB : Furuno FS 1503
 VHF : Furuno FM2710
 Epirb : Mcmurdo E3A406
 PA System : Fitted

TANK CAPACITY

Fuel Oil Tank : 90 m3
 Fresh Water : 60 m3

DECK EQUIPMENT

Tow/Work Winch : ME Single Drum Hydraulic
 40 Tons @ 1st Layer
 Brake Holding : 80 Tons Static
 Drum Capacity : 38 M X 400 M
 Crane : ME Telescopic type 60 T/M
 SWL : 5 Tons @ 12 M
 Stern Roller : Fitted
 Clear Deck : 8.5m x 8.5m = 72.25m2

Particulars given herein are without warranty as to accuracy and interested parties must satisfy themselves by inspection or other means of detail of the vessel

